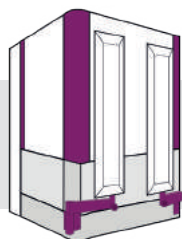




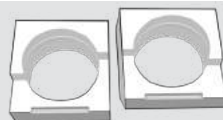
PackshotOne Mark II
QuickStart
INSTALLATION GUIDE

PackshotOne Mini Mark II

PACKAGE COMPOSITION



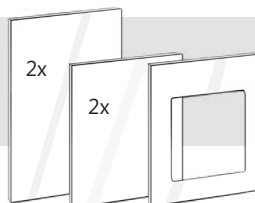
PackshotCreator Mini
Mark II lightbox



2 camera mount
sponges



Product Registration Sheet
& Quick Reference Guide



5 acrylic panels



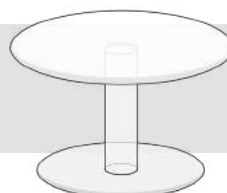
1 power cable



Reflective door
cover



1 USB cable



Round acrylic stand



Bottom glass

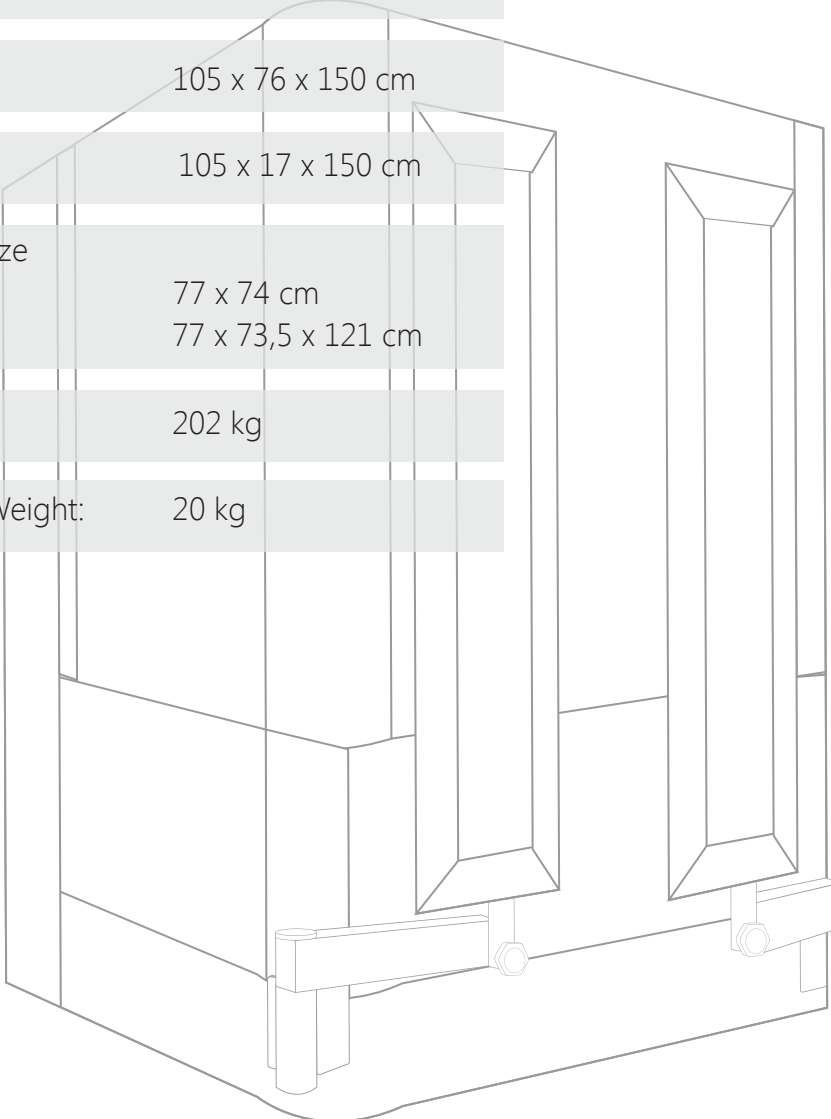
© Sysnext. All rights reserved.

This material is not to be interpreted as a guarantee of earnings and may not be copied, reproduced, modified, published, uploaded, posted or distributed in any way, without PackshotCreator's prior consent.

PackshotOne Mark II

SPECIFICATIONS

Dimension (L x W x H):	105 x 95 x 150 cm
Light Box Body:	105 x 76 x 150 cm
Back Light Panel:	105 x 17 x 150 cm
Maximum Target Size	
<i>Top Shots:</i>	77 x 74 cm
<i>Side Shots:</i>	77 x 73,5 x 121 cm
Total Weight:	202 kg
Maximum Object Weight:	20 kg



CONTACT INFO:

Email: help@packshot-creator.com

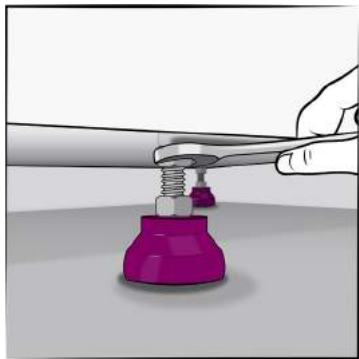
Website: <http://esupport.packshot-creator.com>

PackshotOne Mark II

SYSTEM PLACEMENT

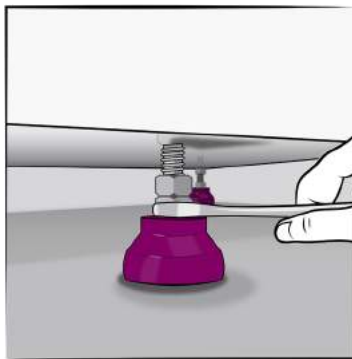
ROLLING THE UNIT:

01



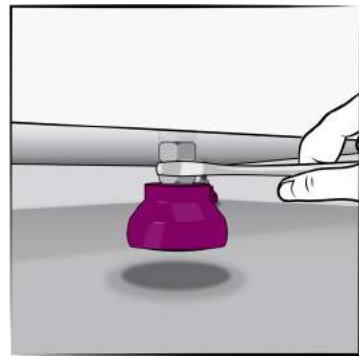
Use the #24 wrench to adjust the leg height. Start by loosening the top nut.

02



Rotate the bottom nut to make the leg higher or lower.

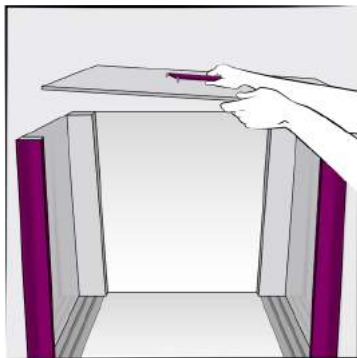
03



Once the desired height is obtained, tighten the top nut against the bottom of the unit to lock the leg into position. When all four legs are up, the unit can easily roll on wheels.

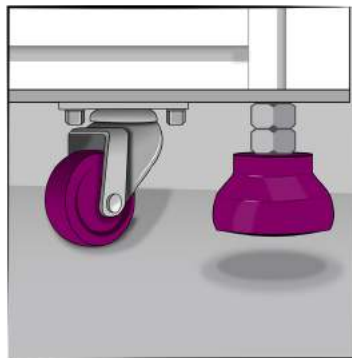
GUIDING THE UNIT THROUGH A DOORWAY 1/2:

01



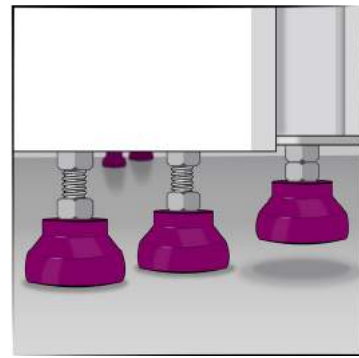
If the doorway is less than 100 cm wide, you will need to remove the top and back light panel to get the unit through the door. First, remove the 6 white hand screws and take off the top.

02



To remove the back light panel from the main unit, keep the light box unit on its wheels.

03



Lower the legs on the back light panel to the ground.

PackshotOne Mark II

SYSTEM PLACEMENT

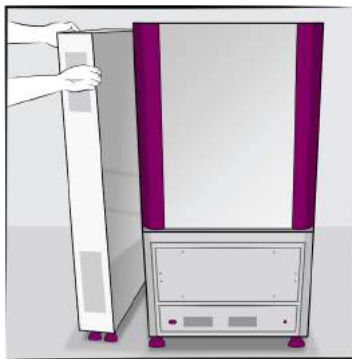
GUIDING THE UNIT THROUGH A DOORWAY /2:

04



Support the back light panel in the vertical position while removing the 4 white hand screws and connecting plate on each side then roll the main unit away to separate.

05



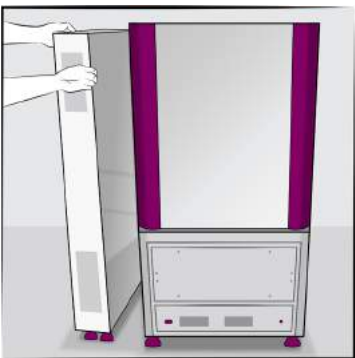
Move the light box and back light panel through the doorway separately.

PackshotOne Mark II

HARDWARE INSTALLATION

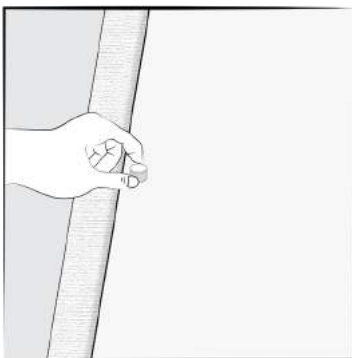
SWING LIGHT INSTALLATION 1/3:

01



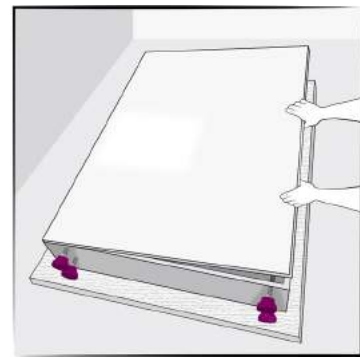
Separate the back light panel from the main unit (as shown in **steps 1-5** in the Guiding the Unit Through a Doorway section).

02



Lay the back light panel on a piece of foam and remove the 6 small white hand screws.

03



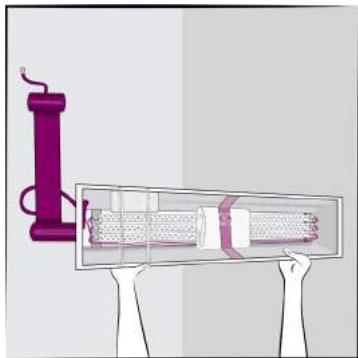
Take off the acrylic diffusion plate.

PackshotOne Mark II

HARDWARE INSTALLATION

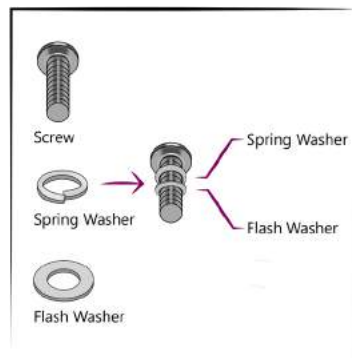
SWING LIGHT INSTALLATION 2/3:

04



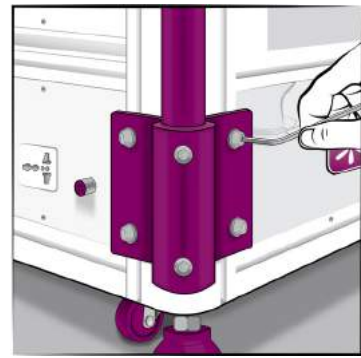
Remove the front swing lights from inside.

05



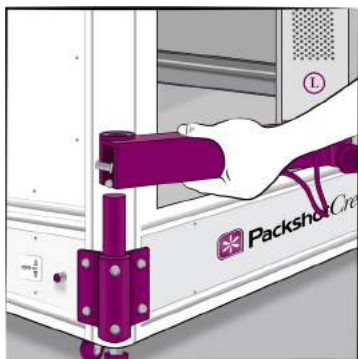
Prepare the screws and washers as pictured.

06



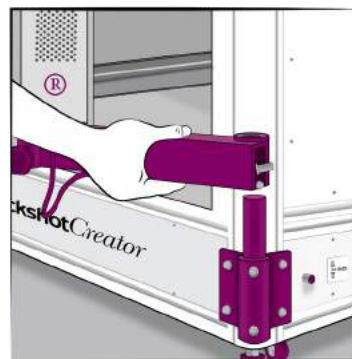
Use an Allen key to attach the holding brackets on each front corner as pictured.

07



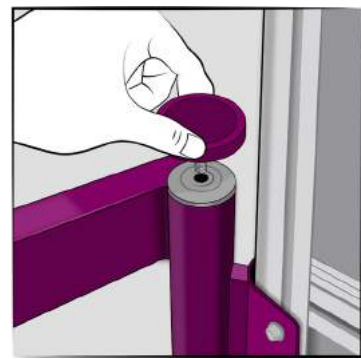
Place the light panel that has a sticker "L" on the holding bracket on the left.

08



Place the light panel that has a sticker "R" on the holding bracket on the right.

09



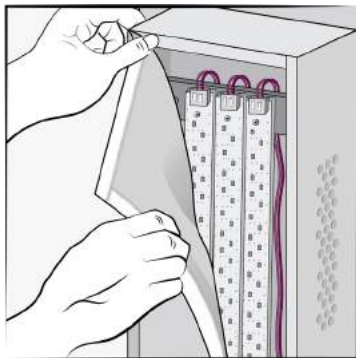
Use the black hand screw and flat washer to connect the light panel to the holding bracket.

PackshotOne Mark II

HARDWARE INSTALLATION

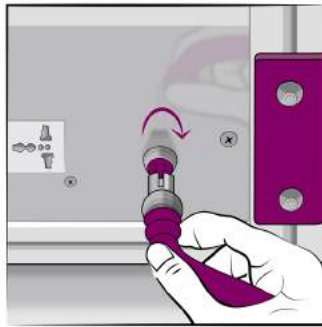
SWING LIGHT INSTALLATION 3/3:

10



Attach the diffusion cover.

11



Plug the swing lights into the main system then rotate the external ring to tighten.

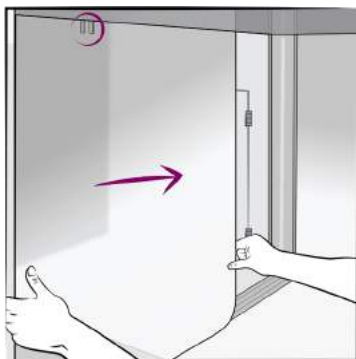
12



Re-attach the back light panel to the light box.

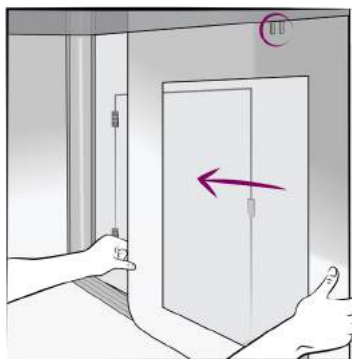
ACRYLIC PANEL INSTALLATION 1/2:

01



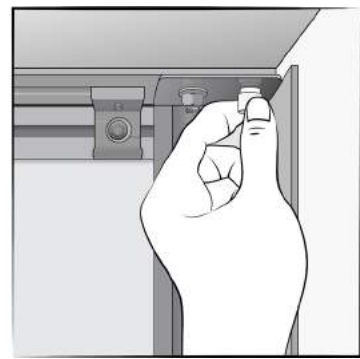
Five acrylic panels came with the system – two large (all solid) and three small (two solid and one with an opening). Choose which two panels to use. Slide in the panels from the front.

02



If you use the short one with the opening, place it on the side with the door for convenient side loading. **Note:** When inserting, be sure they go through the holding bracket at the top.

03



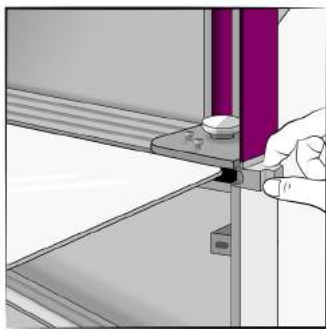
If you want to use the large panels, remove the small white hand screws

PackshotOne Mark II

HARDWARE INSTALLATION

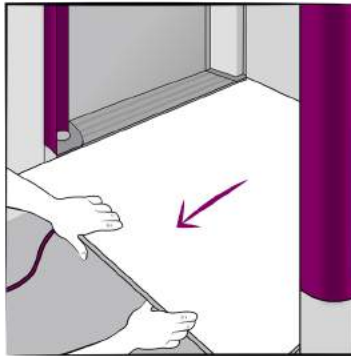
ACRYLIC PANEL INSTALLATION 2/2:

04



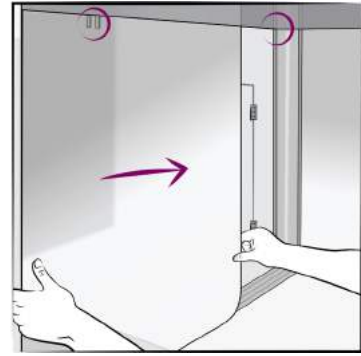
Remove also the related fixing blocks holding the middle glass.

05



Slide out the middle glass.

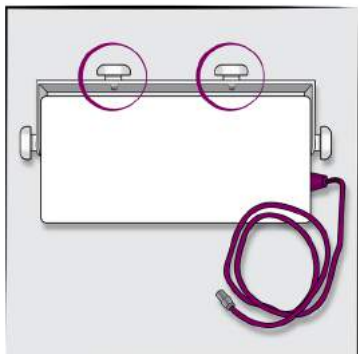
06



Slide in the large panels from the front.

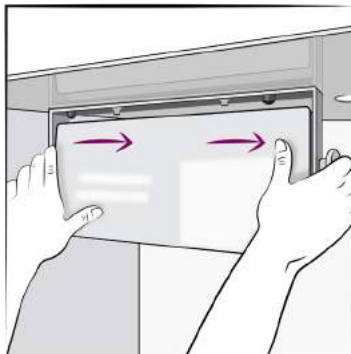
TOP LIGHT PANEL INSTALLATION 1/2:

01



Remove the 2 white hand screws on the frame of the top light panel.

02



Insert the 2 hanging screws under the top through the 2 holes on the frame of the top light panel. Slide the top light panel to the right with caution.

03



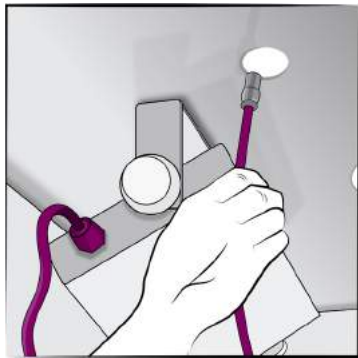
Remove the 2 front light columns.

PackshotOne Mark II

HARDWARE INSTALLATION

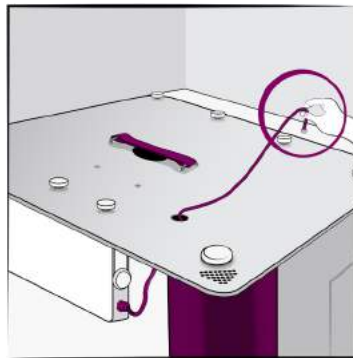
TOP LIGHT PANEL INSTALLATION 2/2:

04



String the top light power cable through the ceiling hole.

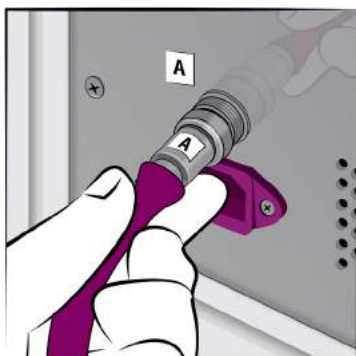
05



Plug it into the port on the top of the back light panel. Rotate the ring to tighten.

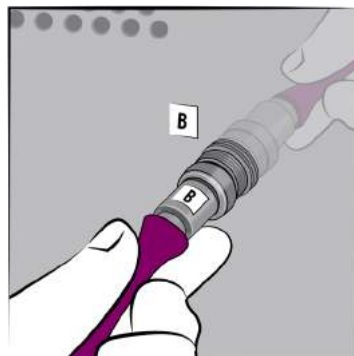
CABLE CONNECTIONS 1/2:

01



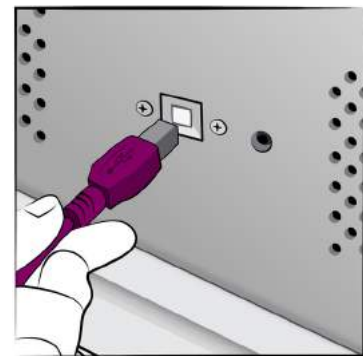
Plug the connection cable "A" from the light box into the back light panel port "A". Rotate the ring to tighten.

02



Then, plug the connection cable "B" into the back light panel port "B". Rotate the ring to tighten.

03



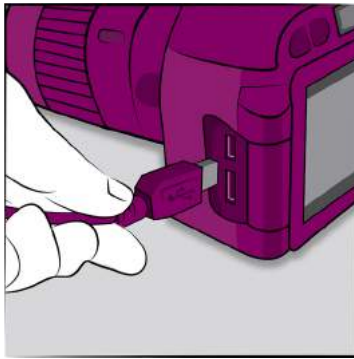
Plug the power and USB cables into the system. Plug the other ends into a power outlet and computer, respectively.

PackshotOne Mark II

HARDWARE INSTALLATION:

CABLE CONNECTIONS 2/2:

04



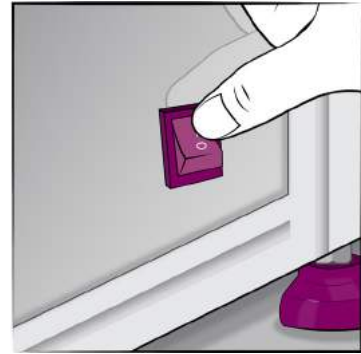
Connect compatible camera to your computer using the USB cable supplied with the camera.
(Optional): Instead of batteries, we recommend using an AC power adaptor to power your camera.

05



Note: If you intend on using a non-compatible camera, connect the system to your camera using the shutter release cable (not included).

06

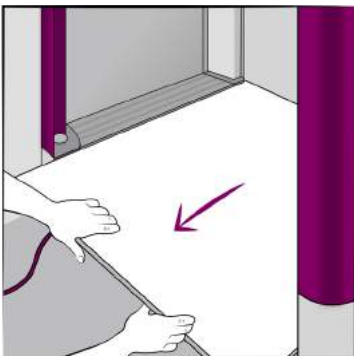


Turn the system power switch to the "ON" position.
Note: Make sure to plug the swing light cables into the main system before turn the system power switch to the "ON" position.

(OPTIONAL) ADDITIONAL BOTTOM GLASS INSTALLATION STEP A 1/2:

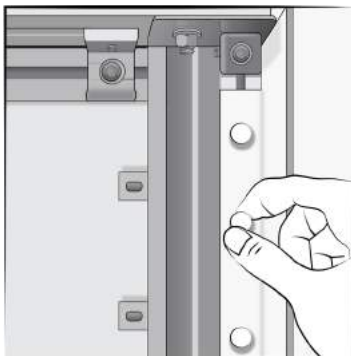
(Follow step A if you buy PackshotOne Mark II with 50 kg load capacity in advance)

01



Follow the **steps c-e** in the Acrylic Panel Installation section to remove the middle glass.

02



Unscrew and remove the flap plates on both sides of the bottom front corner.

03



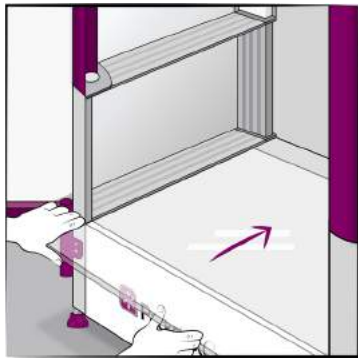
Remove the small white hand screws on the holding bar.

PackshotOne Mark II

HARDWARE INSTALLATION

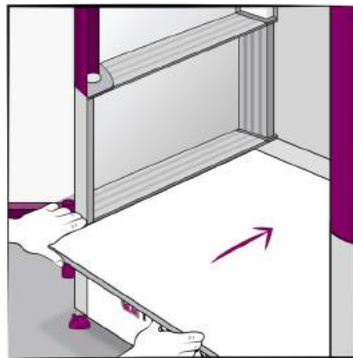
(OPTIONAL) ADDITIONAL BOTTOM GLASS INSTALLATION STEP A 2/2:

04



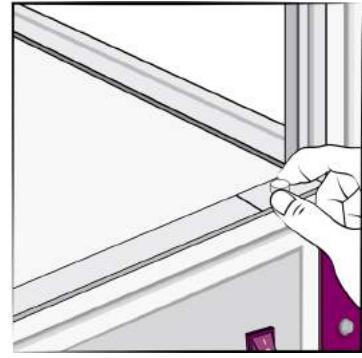
Slide in the additional bottom glass from the front. **Note:** The additional bottom glass is heavy and should be handled with caution.

05



Slide in the additional acrylic diffusion plate from the front.

06



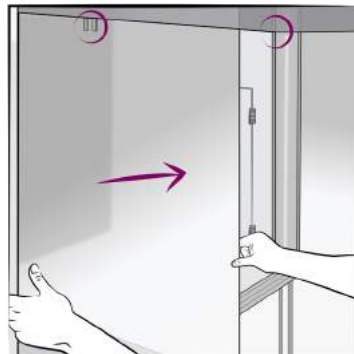
Replace the small white hand screws on the holding bar.

07



Replace the small white hand screws on the flap plates.

08



Slide in the shorter acrylic panels from the front.

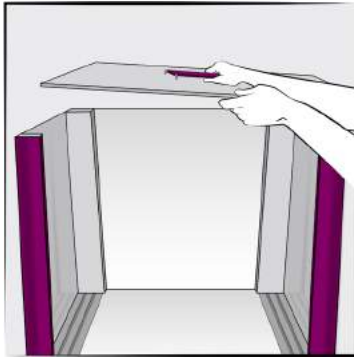
PackshotOne Mark II

HARDWARE INSTALLATION

(OPTIONAL) ADDITIONAL BOTTOM GLASS INSTALLATION STEP B 1/2:

(Follow step B if you are upgrading the load capacity of PackshotOne Mark II from 20 kg to 50 kg)

01



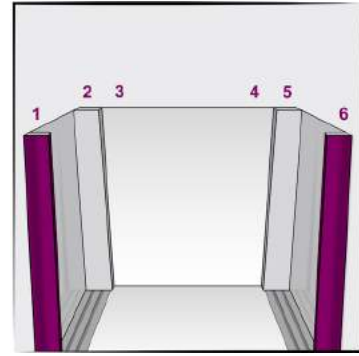
Follow the steps **a-g** in the **Step A** to place the bottom glass and the acrylic diffusion plate. Remove the white hand screws and take off the top.

02



Place an acrylic tube on each hole where the top connects to the light box.

03



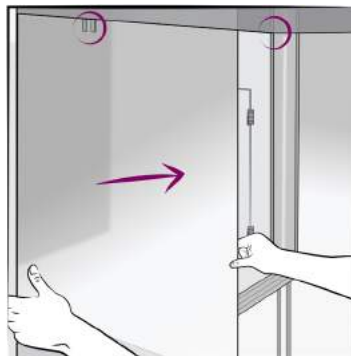
There are 6 holes in total.

04



Put the top back on with hand screws going through the acrylic tubes.

05



Slide in the large acrylic panels from the front.